



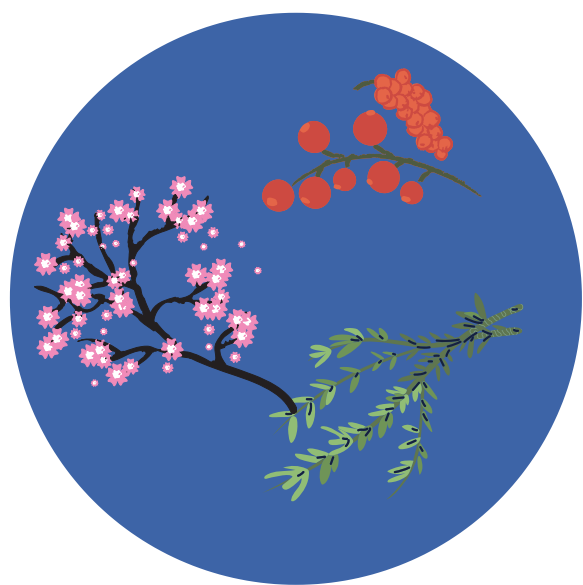
MICHIGAN POISON CENTER
WAYNE STATE UNIVERSITY

POISON PREVENTION: SPRINGTIME



- **Wear gloves & other protective gear when applying early season fertilizer & herbicides.**
- **Review "use of product" for other safety instructions.**
- **Wash hands & exposed skin immediately after use of lawn care products & chemicals.**

- **Do not apply fertilizer or herbicides to the lawn or garden when children or pets are present.**
- **Keep pets & small child off of the lawn & away from the garden for the amount of time specified on fertilizer and herbicide packages.**



- **Trees and plants will begin to bud & blossom soon.**
- **Budding plants, berries, & leaves are choking hazards & may be poisonous.**
- **Keep small children away from budding & new plant growth.**

- **May is morel hunting season in Michigan.**
- **Morels fruit from late April to the middle of June.**
- **When picking wild mushrooms, never mix species.**
- **Learn more at michigan.gov/dnr**



- **When hiking or walking through wooded areas in Michigan be aware of the eastern Massasauga.**
- **Michigan is home to the eastern Massasauga, otherwise known as the Michigan Rattler and it is the only venomous snake native to Michigan.**
- **They are active from the middle of March to October.**
- **Visit: Michigan.gov/dnr to learn more about the eastern Massasauga.**
- **If bitten, call **911** or seek medical care immediately.**



**CALL US
NOW**

1-800-222-1222

FREE, CONFIDENTIAL, EXPERT ADVICE
24/7/365



WWW.MIPOISONHELP.ORG

